

[Download Webinar Recording Here](#)

Start Your Studies Online, Continue On-Campus in Australia

Future Student Webinar

Presented By

Jason Gabriel

Higher Education Manager
- Learning Support

Seemab Fayyaz

Current EIT Student

Caroline Patterson

Accreditation & Compliance Manager

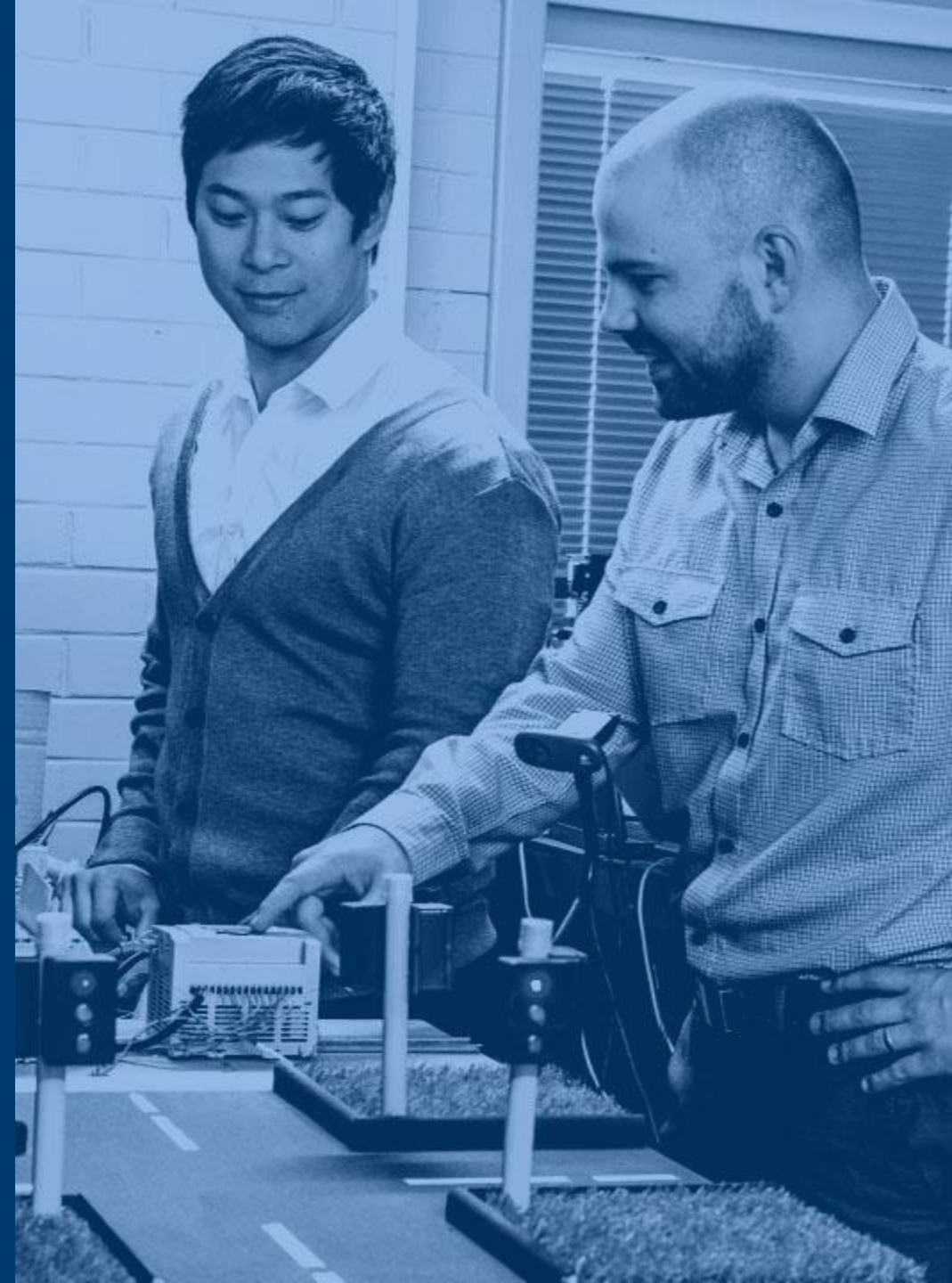
Adriana Santana Conceicao

Current EIT Student



Agenda

1	Welcome & Introductions
2	About EIT
3	Courses Overview & Campus Locations
4	Why Start Your Studies Online?
5	Hear from Two Online EIT Students - Waiting to transition to on-campus studies
6	How to Apply, Contact a Course Advisor
7	Q & A



Introductions

Jason Gabriel

Higher Education Manager - Learning Support

Jason has an immense amount of experience in coaching and learning development and his 10 year career has provided him exceptional administrative skills. He is enthusiastic about helping people, and with his outstanding communication skills, provides our students the highest level of encouragement in anticipation of their success.

Jason currently oversees EIT's Learning Support Officers who ensure the Bachelor of Science, Master of Engineering, Undergraduate and Graduate Certificate course units are run effortlessly each semester, and that students are afforded the very best support for their studies.

Caroline Patterson

Accreditation & Compliance Manager

Caroline's career in education and training has spanned over 20 years, and she has been involved with multiple successful regulator, professional body, and internal audits. She has extensive experience in policy development in the VET and Higher Education sectors, ensuring compliance across all policies and processes institute-wide.

Caroline is responsible for the oversight of EIT's VET and Higher Education operations and also is a member of EIT's Governance Board.

We will formally introduce our student presenters later in this session.



We are dedicated to ensuring that you receive a world-class education and gain skills that you can immediately implement in the workforce.



World-Class Australia Accredited Education

Our vocational programs and higher education degrees are registered and accredited by the Australian Government. We have programs that are also recognized under three international engineering accords.



Engineering Specialists

EIT is one of the only institutes in the world specializing in Engineering. We deliver professional certificates, diplomas, advanced diplomas, undergraduate and graduate certificates, bachelor's and master's degrees, and a Doctor of Engineering.



Industry Experienced Lecturers

Our lecturers are highly experienced engineers and subject specialists with applied knowledge. The technologies employed by EIT, both online and on-campus, enable us to source our lecturers from a large, global pool of expertise.



Industry Oriented Programs

Our programs are designed by industry experts, ensuring you graduate with cutting-edge skills that are valued by employers. Our program content remains current with rapidly changing technology and industry developments.



Unique Delivery Model

We deliver our programs via a unique methodology that makes use of live and interactive webinars, an international pool of expert lecturers, dedicated learning support officers, and state-of-the-art technologies such as hands-on workshops, remote laboratories, and simulation software.

Our On-Campus Programs



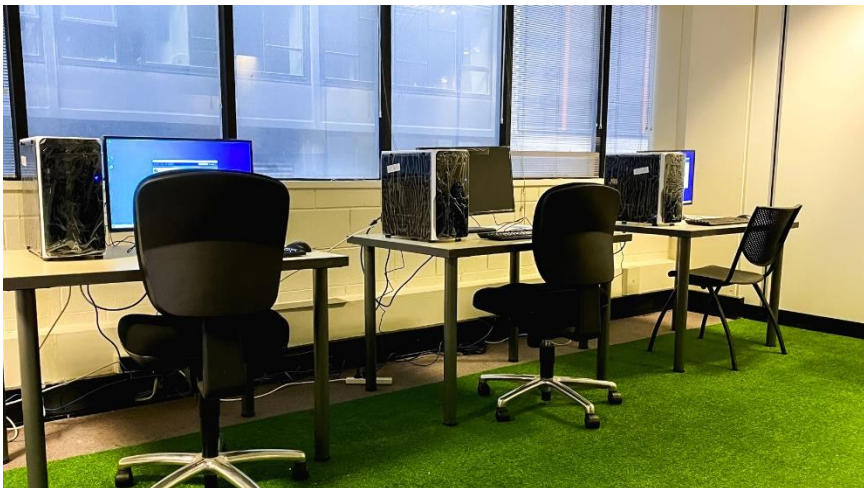
Undergraduate Programs	CRICOS Code	Campus
Bachelor of Science (Industrial Automation Engineering)	095814J	Perth
Bachelor of Science (Electrical Engineering)	095813K	Perth
Bachelor of Science (Mechanical Engineering)	095815G	Perth
Bachelor of Science (Civil and Structural Engineering)	095812M	Perth

Postgraduate Programs	CRICOS Code	Campus
Master of Engineering (Industrial Automation)	094185G	Perth & Melbourne
Master of Engineering (Electrical Systems)	0100462	Perth & Melbourne
Master of Engineering (Mechanical)	0100463	Perth & Melbourne
Master of Engineering (Civil: Structural)	0100461	Perth & Melbourne
Doctor of Engineering	102709C	Perth

Campus Locations: Perth, Western Australia



Campus Locations: Melbourne, Victoria





Students have the option to start their studies online from anywhere in the world and then apply to continue on-campus in Australia.

Bachelor's

- › **Next online intake:** 14 February, 2022

Master's

- › **Next online intake:** 3 January, 2022

Doctor of Engineering

- › **Next online intake:** 31 January, 2022

On Campus (all courses)

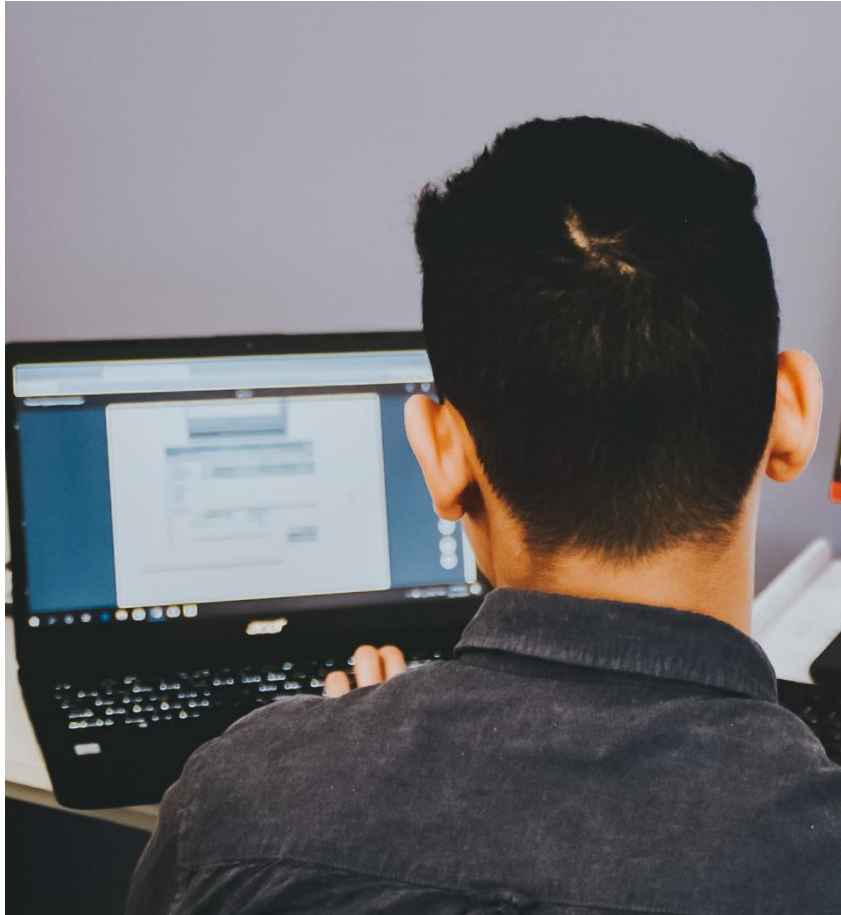
- › **Semester 1:** 21 February 2022
- › **Semester 2:** 1 August 2022

You will also have the option to defer your on-campus studies to the following intake, if you don't want to commence your studies online.

Learn more: <https://www.eit.edu.au/eit-covid-19-information/>

A person is shown from the side, writing in a spiral-bound notebook with a pen. To their right is a laptop displaying a complex technical diagram or flowchart. The background is a light blue wall with some papers pinned to it. The entire scene is overlaid with a semi-transparent blue filter.

Why Start Your Studies Online at EIT?



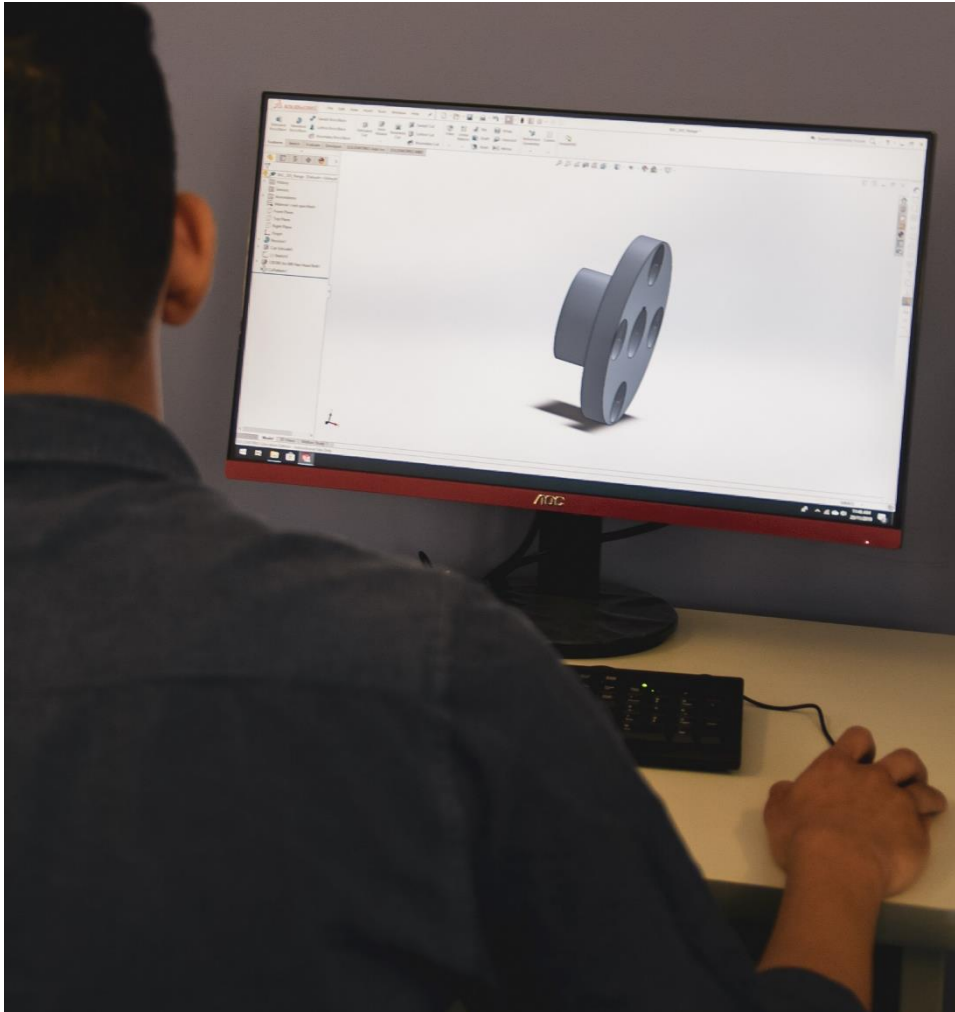
As an online student, you will benefit from EIT's unique personalized synchronous delivery methodology that encourages you to advance your technical and technological knowledge, while forming global networks and balancing life and work commitments.

- EIT has been delivering online programs for over 15 years
- You will be studying the same Australian accredited program
- Tutorials in the online mode of delivery are live and interactive
- You will have a dedicated Learning Support Officer for each unit you study, in addition to Student Services and your Lecturers
- You will create global networks with EIT students around the world

Online and on-campus students complete practical exercises using a combination of simulation software and remote and virtual laboratories.



- You will receive an overall cost saving
- You will receive credit once on-campus, for the units you have successfully completed online
- No GTE assessment required to start an online unit(s)
- Any study done offshore whilst holding a student visa will be counted towards post-study work rights



As an online student, you will benefit from EIT's unique personalized synchronous delivery methodology that encourages you to advance your technical and technological knowledge, while forming global networks and balancing life and work commitments.

Our Online Learning Methodology

Our unique online delivery methodology makes use of:

- Live and interactive tutorials
- An international pool of expert lecturers
- Dedicated learning support officers, and
- State-of-the-art technologies such as hands-on workshops, remote and virtual laboratories, and simulation software

When studying at EIT, students complete practical exercises using a combination of remote and virtual laboratories and simulation software.

Practical Experience

In these remote and virtual laboratories students can control physical equipment and sensors equivalent to the traditional university engineering lab.

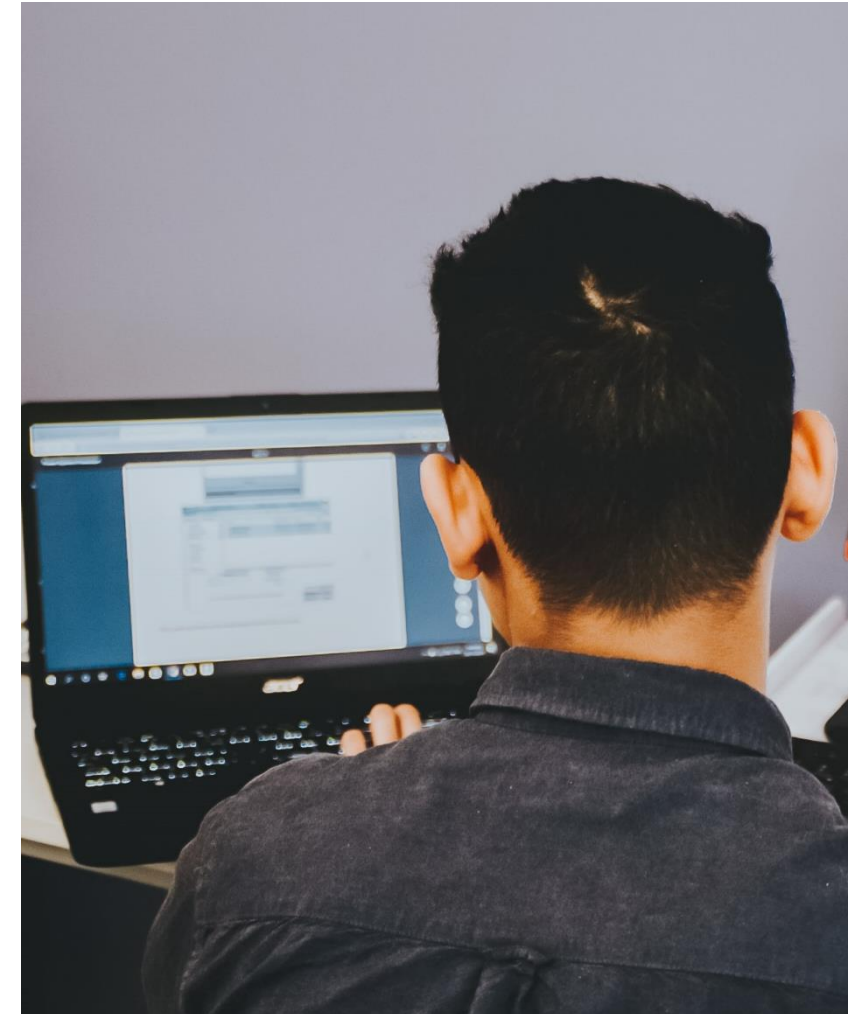
This means that even though you are studying online, you are not missing out on your hands-on, practical experience.

For the on-campus students, workshops and work integrated learning via an internship is incorporated into the student journey.

Real World Ready

Through these hands-on exercises using simulation software, remote laboratories, practical based assignments and interactive discussion groups, students can grasp new knowledge and apply it successfully to the real world.

Each hosted engineering software and hardware can be controlled in real time; it's as simple as logging in and selecting an available lab and timeslot!





“As a LSO I love supporting our students on their learning journey and ensuring their experience with EIT is a positive and rewarding one”

*Ms. Emily Levy
Higher Education LSO*

Learning Support Officers (LSOs)

Guides the students from the onboarding process through to graduation.

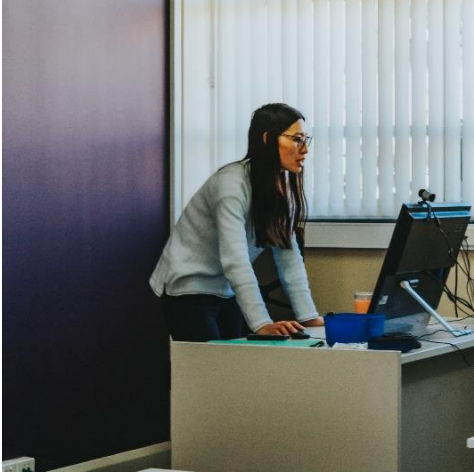
Each unit has a dedicated LSO who acts as the keystone between students, academic staff and unit materials, ensuring ease of communication and a high quality experience.

Contact point for students for assistance with:

- *Systems*
- *Processes*
- *Course progression*
- *General administration*

LSOs provide guidance around academic integrity, assisting students in planning their studies each semester including:

- *Reminders for assessments*
- *Submission requirements and*
- *Important updates and reminders*



Lecturers and Instructors

The academic faculty ensures that you receive a high quality education. They will look after your:

- Learning experience
- Practicals (workshops, remote and virtual labs)
- Work integrated learning component of applicable courses



Whether you are studying online or on-campus, our course coordinators provide academic guidance and support to you throughout your studies. In addition, our lecturers are available for appointments during classroom contact hours and after class via email, phone, and Skype.

Our class sizes are small to allow you to build rapport with lecturers and fellow students. This enables you to ask questions and seek clarity when needed.



Welcome pack on acceptance of offer – includes everything the student needs to know when preparing for life in Australia.



Free airport pick up



Student Card – official ID cards which provide discounts on busses, trains, purchases (IT equipment) and entertainment



Full orientation week (including relevant Australian laws, regulations, health, banking and recreational options)



Accommodation – advice on locating appropriate and convenient home-stays, rental accommodations



Pastoral care – pre-examination jitters, homesickness, safety, health and wellbeing, attendance and support with study planning



Job search tips, pre interview skills training, resume preparation and assistance with internship opportunities.

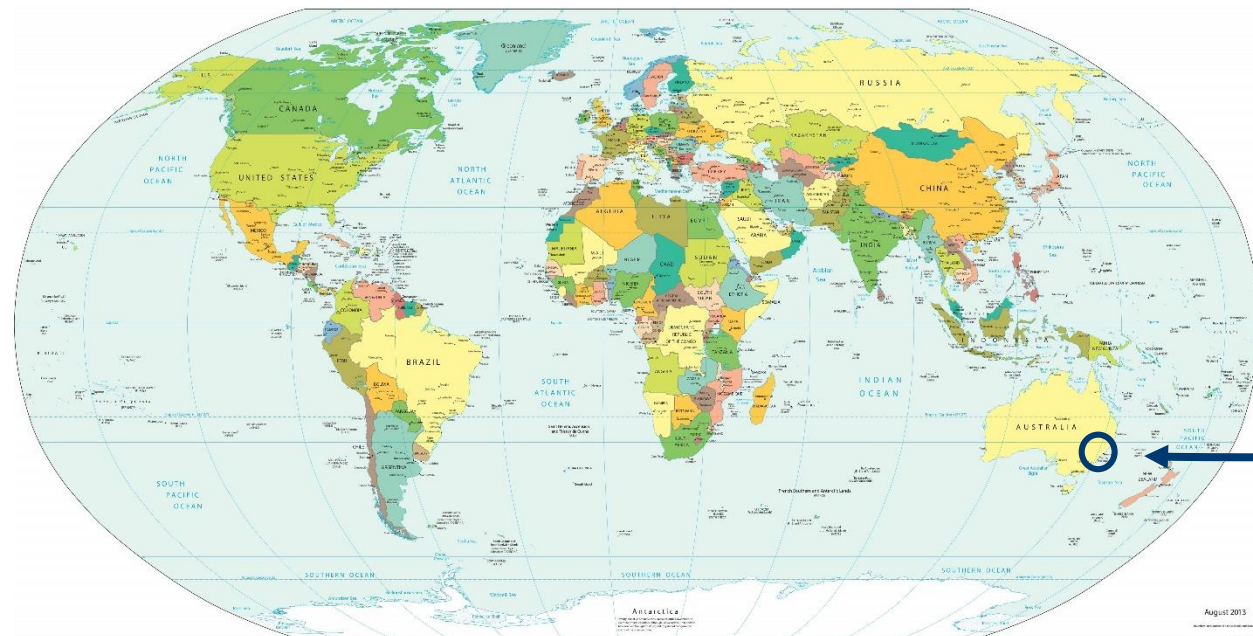


Parking Permits - Free on campus parking (Perth only)



Adriana Santana Conceicao

- › Currently living in Sydney, New South Wales, Australia
- › Currently studying EIT’s Master of Engineering (Electrical Systems) online
- › Waiting to transition to on-campus studies at EIT’s Bentley campus in Perth, Western Australia



What made you choose EIT?



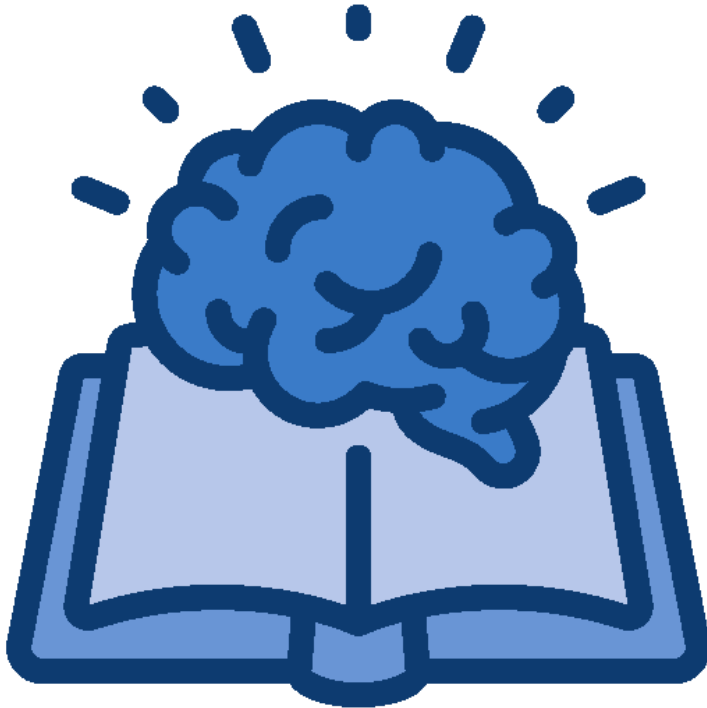
- > Because EIT is one of the only institutes in the world specializing in engineering.
- > The courses are accredited by the Australian Government and the course I chose is recognized by Engineers Australia.
- > EIT has a diverse environment, with students from more than 140 countries, which makes me feel comfortable since the team is prepared to deal with international students.

Why the **Master of Engineering (Electrical Systems)**?

- > I'm an Electrical Engineer and also because I took a look at the course curriculum and saw several topics involving Renewable Energy, which is great because I found a Masters to develop this specific and current learning.



- > Have your lecturers and Learning Support Officers been supportive while studying online?
- > At all times! They have been very supportive, especially when it comes to International students struggles. All of us are living in tough times due to the Covid situation, there are differences of time zone, and there are some differences in the system of teaching compared to my country.
- > The support of the lecturers and Learning Support Officers has been crucial.



- › **Assessments**
- › The assessments (mainly 2, 3 and 4) have been turning points to increase my knowledge. I'm impressed with how I've learned so far.
- › I'm very interested in Renewable Energy, I'm surprised how many topics about it I've seen and important designs I've developed.
- › At first glance, I thought I wasn't capable of but during my research and lecturers' orientation, I realized I can do a good job.
- › **Remote labs**
- › It is an opportunity to put into practice the knowledge you've learnt during tutorials. All the software are broadly used in the industry, which can prepare students for future jobs. The remote labs are simple to use, you just need to book it and that's it.



- › What has been the main benefits of starting online and then continuing on-campus?
- › It is an excellent chance to start the course immediately even with the closed borders, you do not need to lose any time.
- › There is quality in the content delivered.
- › I am grateful to the Institute for allowing me to do this, they understood the complicated situation and allowed me to get started online. For me, it's the main benefit.



- > What are you looking forward to doing after the completion of your degree?
- > The first thing is to work in my field to practice the knowledge I've learned during the course, and through renewable energies, try to contribute to the reduction of harmful gases in the atmosphere.
- > **Final comments / Advice**
- > Advice for students who intends to start an online course: Go ahead!
- > It can seem difficult; sometimes it is. However, your classmates, lecturers, Learning Support Officers, Student Services and so on will help you to reach your goals. Of course, the main part depends on you, but the team's support can make the difference.

Seemab Fayyaz

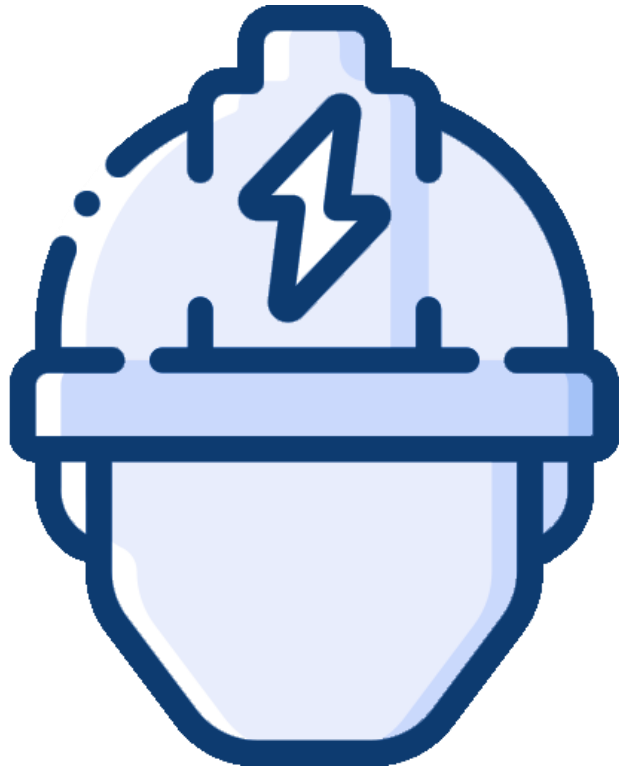
- › Currently living in Pakistan
- › Currently studying EIT's Master of Engineering (Industrial Automation) online
- › Waiting to transition to on-campus studies at EIT's Bentley campus in Perth, Western Australia



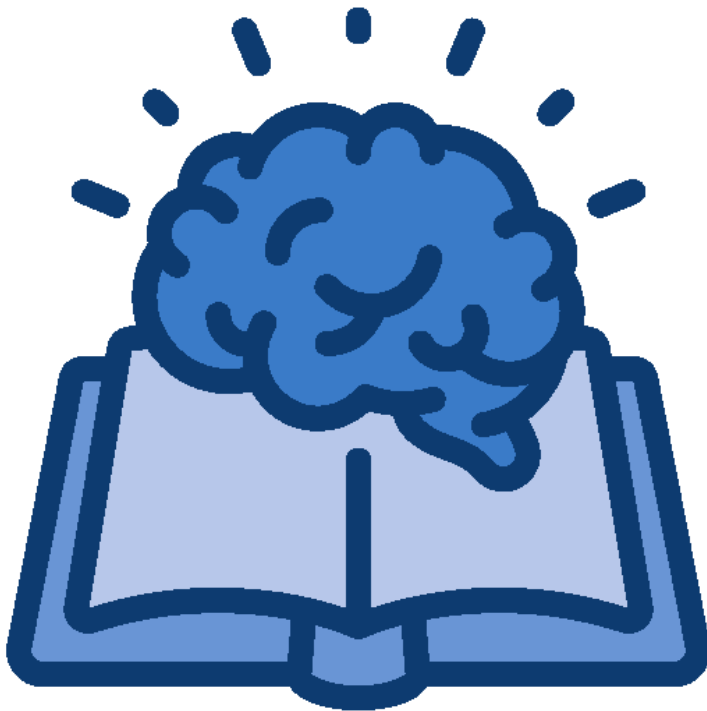
What made you choose EIT?



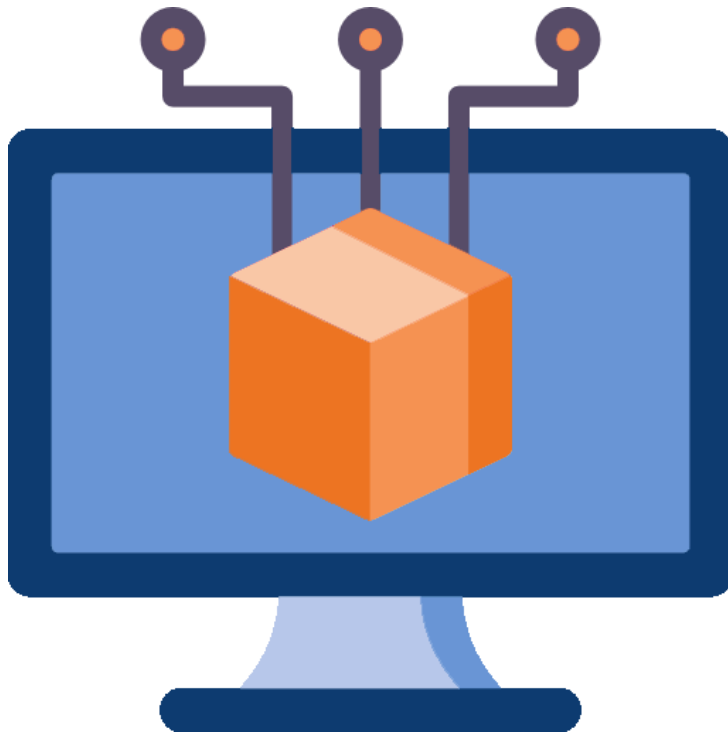
- › I chose EIT for getting my higher education degree because it provides:
 - › a) World class education with emphasis on recent trends in industry
 - › b) the degree I chose is recognized by professional bodies around the world
 - › c) last but not the least in the pandemic it could provide online technical education with no compromise on quality



- › a) My interest in automation during my Bachelor of 'Electrical Engineering'
- › b) A project on 'Greenhouse Automation' further increased my interest
- › c) Because of the increasing scope of automation in industries especially in developing countries the trend of industrial automation is increasing and there is a demand for technical experts in the field.



- › a) Course content and mode of delivery is well organized
- › b) Proper assistance on technical issues is provided by EIT team
- › c) My experience is good so far, so I am satisfied
- › **How have you been supported while studying online?**
- › a) lecturers respond positively to any questions asked during live tutorials
- › b) lecturers provide timely assistance via emails in response to any queries apart from tutorial sessions
- › c) In case of any technical issues LSO aid students for example I had some issues with remote labs in ME502 (term3 2021) and my LSO Jinny Howard assisted me with that and provided guidance



- > Have you experienced the online labs yet? If so, how were they?
- > I have worked on remote labs, its been good so far.
- > a) Remote labs contain all of the software needed in the course
- > b) I had worked on 'Codesys' software in remote labs and the support team offers assistance in case of any issues.
- > c) All of the software like matlab which students need to buy for their personal computers but these are free to use on remote labs. so students does not have to worry about the Software crash or licence problems
- > d) the time slot booking for online labs is a great feature so I could book my labs according to my schedule ahead of time.



- › What has been the main benefits of starting online and then continuing on-campus?
- › Personally, the main benefit is I didn't have to wait for the Australian borders opening to start my studies after my admission confirmation.
- › The tuition fees for the online mode of study is less so I was able to save some money



- > What are you looking forward to doing after the completion of your degree?
- > 1) I plan to work in my country in multinational companies as they prefer foreign graduates
- > 2) My country is agricultural but here this industry is not automated yet at its fullest potential so I would like to bring automation in small industries and especially in agricultural practices in my country.
- > 3) I hope one day in the near future I would be the CEO of an automation consultation firm that would add value to the workplace of my people by bringing innovative solutions.



Already applied?

- › Please contact your **education agent** or our Admissions team at admissions@eit.edu.au

Want further information, or assistance with how to apply?

- › Please contact Kamohelo Tsotetsi (kamohelo.tsotetsi@eit.edu.au), one of our friendly Course Advisors.

Q&A





Engineering Institute of Technology.

Thank you for attending.

Contact Us



Website

www.eit.edu.au



Head Office

1031 Wellington Street West Perth
Perth, WA 6005



Phone

Inside Australia: 1300 138 522
Outside Australia: +61 8 9321 1702



Email

webinars@eit.edu.au

