

[Download Webinar Recording Here](#)



# Your Lifelong Learning Journey: Study Pathways at EIT

Engineering Student Webinar

## PRESENTED BY

**Indumathi V**

Deputy Dean

**Caroline Patterson**

Accreditation and Compliance Manager

**Hermanus Scholtz**

Bachelor of Science (Industrial Automation)

**Martin Masemola**

Doctor of Engineering

# Agenda

**1** Welcome and Introductions

---

**2** Overview of EIT

---

**3** Pathways and Articulation with EIT

- › *Professional Certificates of Competency*
- › *Diplomas, Advanced Diplomas & Vocational Graduate Certificates*
- › *Higher Education Programs*

---

**4** Q & A

## **Indumathi V** | *Deputy Dean*

Indu is a Chartered Professional Engineer with over 18 years of experience in Engineering, Leadership and Engineering Education and is currently working on her PhD in Engineering Education.

As a passionate educator, her current PhD project focuses on using EEG brainwaves to empower student engagement and participation in the classroom.

*"EIT has grown very strongly since I started at the beginning of 2019. Their innovative approach to accessible, flexible, and high-quality education is like no other in the world. The success is strongly attributed to the passionate team of lecturers and staff here at EIT."*

## **Caroline Patterson** | *Accreditation and Compliance Manager*

Caroline's career in education and training has spanned over 20 years, and she has been involved with multiple successful regulator, professional body, and internal audits. She has extensive experience in policy development in the VET and Higher Education sectors, ensuring compliance across all policies and processes institute-wide.

Caroline is responsible for the oversight of EIT's VET and Higher Education operations and also is a member of EIT's Governance Board.

We are dedicated to ensuring that you receive a world-class education and gain skills that you can immediately implement in the workforce.



## Engineering Specialists

EIT is one of the only institutes in the world specializing in Engineering. We deliver professional certificates, diplomas, advanced diplomas, undergraduate and graduate certificates, bachelor's and master's degrees, and a Doctor of Engineering.



## Industry Oriented Programs

Our programs are designed by industry experts, ensuring you graduate with cutting-edge skills that are valued by employers. Our program content remains current with rapidly changing technology and industry developments.



## World-Class Australia Accredited Education

Our vocational programs and higher education degrees are registered and accredited by the Australian Government. We have programs that are also recognized under three international engineering accords.



## Industry Experienced Lecturers

Our lecturers are highly experienced engineers and subject specialists with applied knowledge. The technologies employed by EIT, both online and on-campus, enable us to source our lecturers from a large, global pool of expertise.



## Unique Delivery Model

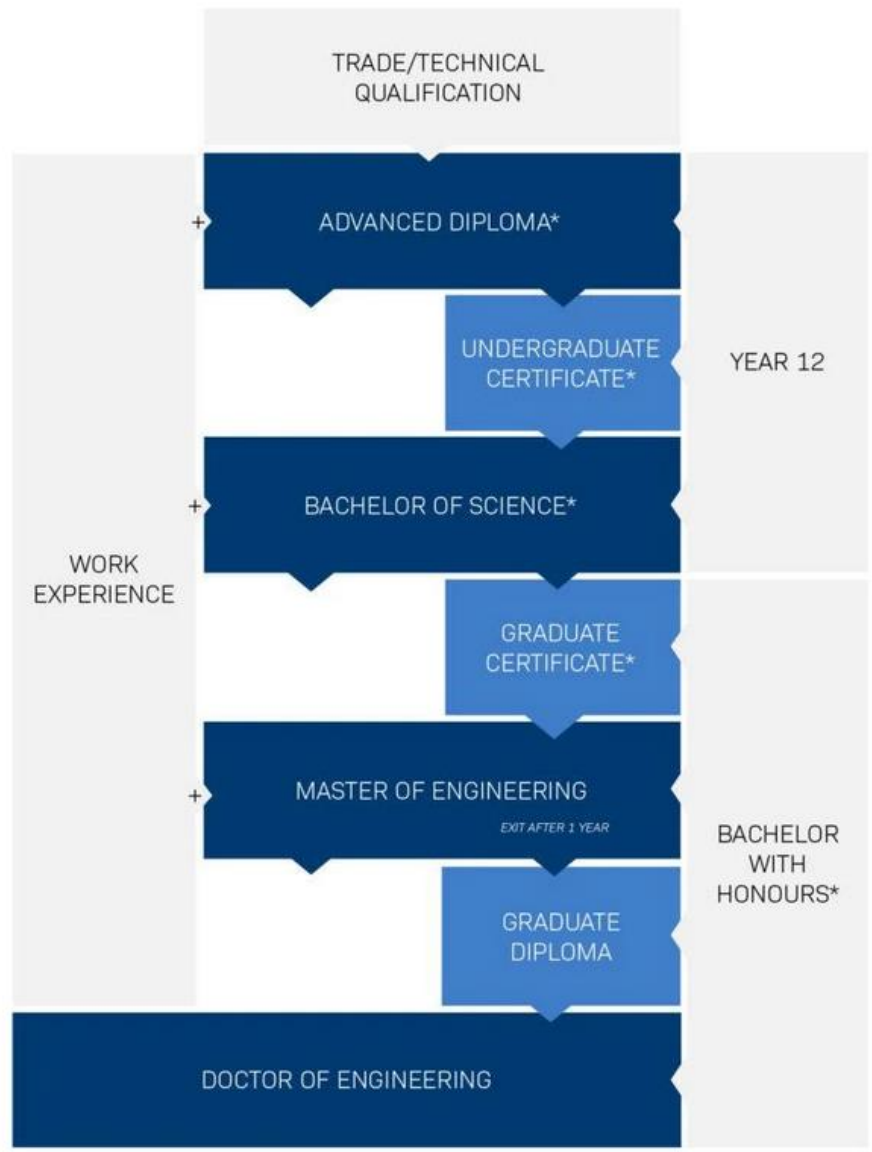
We deliver our programs via a unique methodology that makes use of live and interactive webinars, an international pool of expert lecturers, dedicated learning support officers, and state-of-the-art technologies such as hands-on workshops, remote laboratories, and simulation software.

# Your Lifelong Learning Journey Pathways & Articulation at EIT

EIT provides clear study pathways to allow you to progress from one qualification to another and transition your career from technician, technologist to professional engineer.

We deliver pathways for students with recent secondary education, to those working in industry who wish to formalize their practical experience for career advancement or upskill for evolving technology and industry requirements.





\* In a congruent field





## Articulation

EIT provides automatic course credit for some of the units in EIT's Bachelor of Science degrees for students who have already completed certain EIT Advanced Diplomas which will reduce the time taken to complete an EIT Bachelor Degree.



## Recognition of Prior Learning

EIT has a formal Recognition of Prior Learning (RPL) assessment process that involves assessment of an individual's relevant prior learning (including formal, informal and non-formal learning) to determine the credit outcomes of an individual application for credit.



## Professional Certificate of Competency Courses

- › Successful students spend five to eight hours per week learning the course content.
- › Fortnightly webinars (90 minutes).
- › You must attend 65% of the live webinars.
- › If you cannot attend a live webinar, you can provide a summary in place of attendance.
- › If a student does not achieve the required score, they will be given an opportunity to resubmit assignments to obtain the required score.

*Intakes: Throughout the year*  
*Duration: 3 months part-time*

**These courses allow industry professionals, irrespective of their level of qualification, opportunities to upskill with evolving specializations in fields of engineering.**

### Schools of Engineering

- › Industrial Automation, Instrumentation and Process Control
- › Civil Engineering
- › Data Comms & Industrial IT
- › Electrical Engineering
- › Electronic Engineering
- › Mechanical Engineering
- › Engineering Management
- › Machine Learning and Artificial Intelligence

The [Professional Certificate of Competency in Hydraulics and Pneumatics](#) provides credit for the corresponding unit in EIT's Bachelor of Science (Mechanical Engineering) degree.



## Ms Leticia Oppong

Currently works as a Field Engineer at FieldCore

Completed EIT's [Professional Certificate in Programmable Logic Controllers \(PLCs\) & SCADA Systems](#)

This professional development course was a valuable choice in up-skilling and cross-skilling in her career.



“This year, I decided I wanted to expand my portfolio. After some consultation, a course in PLC and SCADA emerged as the best option to get that foundation I needed to broaden my expertise. Due to my work schedule, attending an in-person class was not on the table, so I started looking for online options. A colleague mentioned EIT, where he had taken a master’s some years earlier. So, I went to the website and got enrolled!”



## Diplomas & Advanced Diplomas

- › Successful students spend approximately 10-15 hours per week.
- › Weekly webinars (60 minutes).
- › You must attend 70% of the live webinars.
- › If you cannot attend a live tutorial, you can provide a summary in place of attendance (in most units).



### Diplomas

*Intakes: Throughout the year*

*Duration: 12 – 36 months part-time intensive*

#### Schools of Engineering:

- › Industrial Automation,
- › Instrumentation and Process Control
- › Civil Engineering
- › Data Comms & Industrial IT
- › Electrical Engineering



### Advanced Diplomas

*Intakes: Throughout the year*

*Duration: 18 months to 24 months part-time intensive*

- › Electronic Engineering
- › Mechanical Engineering
- › Engineering Management
- › Biomedical Engineering

## Graduate Certificate

- › Successful students spend approximately 10-15 hours per week.
- › Weekly webinars (90 minutes).
- › You must attend 70% of the live tutorials.
- › If you cannot attend a live webinar, you can provide a summary in place of attendance.

### 52859WA - Graduate Certificate in Renewable Energy Technologies

*Intakes: 6 Sept 2021*

*Duration: 6 months intensive part-time*

This program is designed for students who aim to build up their theoretical and practical knowledge in the field of standalone and grid-connected photovoltaic systems, hydro-electric power generation systems, and wind power plants. The course will also enhance your learning experience in energy storage systems, distributed generation systems as well as non-mainstream renewable energy technologies used for power generation.





## Hermanus Scholtz

- › Technical Service manager of Ab-Inbev
- › From Namibia
- › Completed EIT's [52708WA Advanced Diploma of Industrial Automation](#) in 2019
- › Articulated into and currently studying EIT's [Online - Bachelor of Science \(Industrial Automation Engineering\)](#)

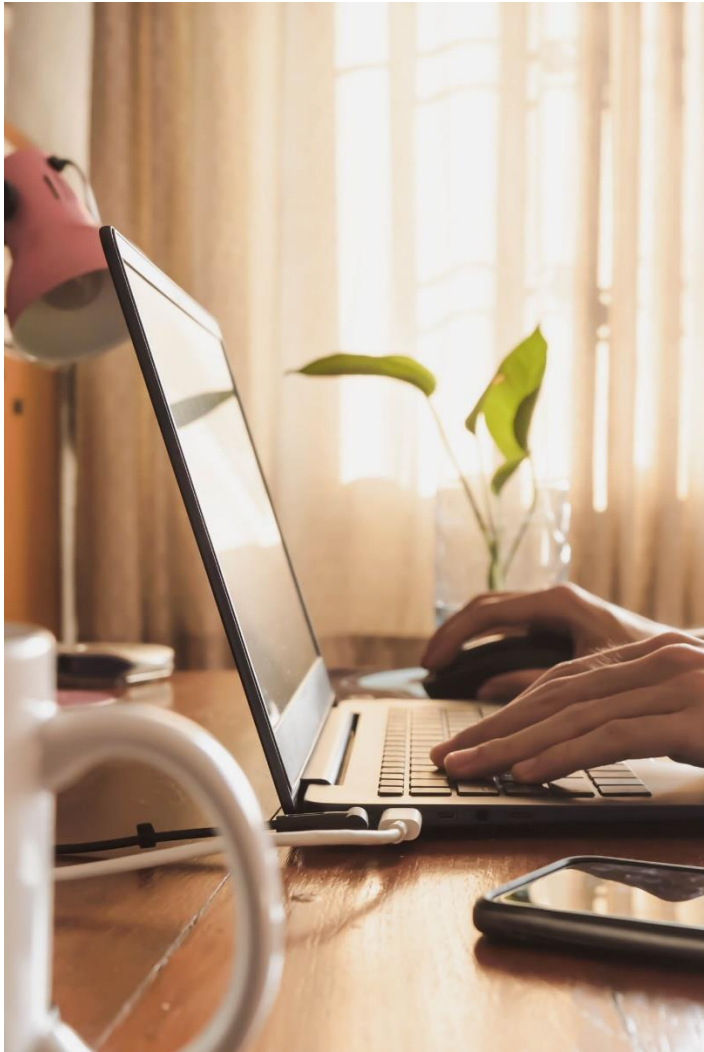
“The course design was well laid out and very helpful. The lecturers were all professional practicing engineers. The course was very interactive, and this advanced me to solve some technical challenges within our industry of automation and implemented best practices in our facility.”



# What made you decide to study with EIT?



- **The flexibility within the program** - the support system that EIT offers for its students from the LSO, Lecturer and online material.
- **Industry orientated designed courses** - The best practices one needs to apply to deliver sustainable results for our employers.
- **The lecturer experience** - Professional practicing engineers, they're not just academics.
- **The recognition of the programs** - Internationally recognized.



How have you found your learning experience with EIT so far (in particular the online mode)?

Have you felt supported by your Learning Support Officer(s)?

Have you had a favourite lecturer/instructor so far?

- Very supportive - Turnaround support < 24 hrs , Sometime even over weekend, LSOs are very engaged and ready to assist.
- Yes LSOs - Paul Celenza, Allison Grey, Jinny Howard, Angie Tran and Megan Kellett.
- Lecturers - Deon Reynders, John Lawrence, Poonam Savsani, Alister Anderson, John Piperides and Dr Yuanyuan Fan.



Have you found that you've been able to apply your knowledge from your studies to your workplace?



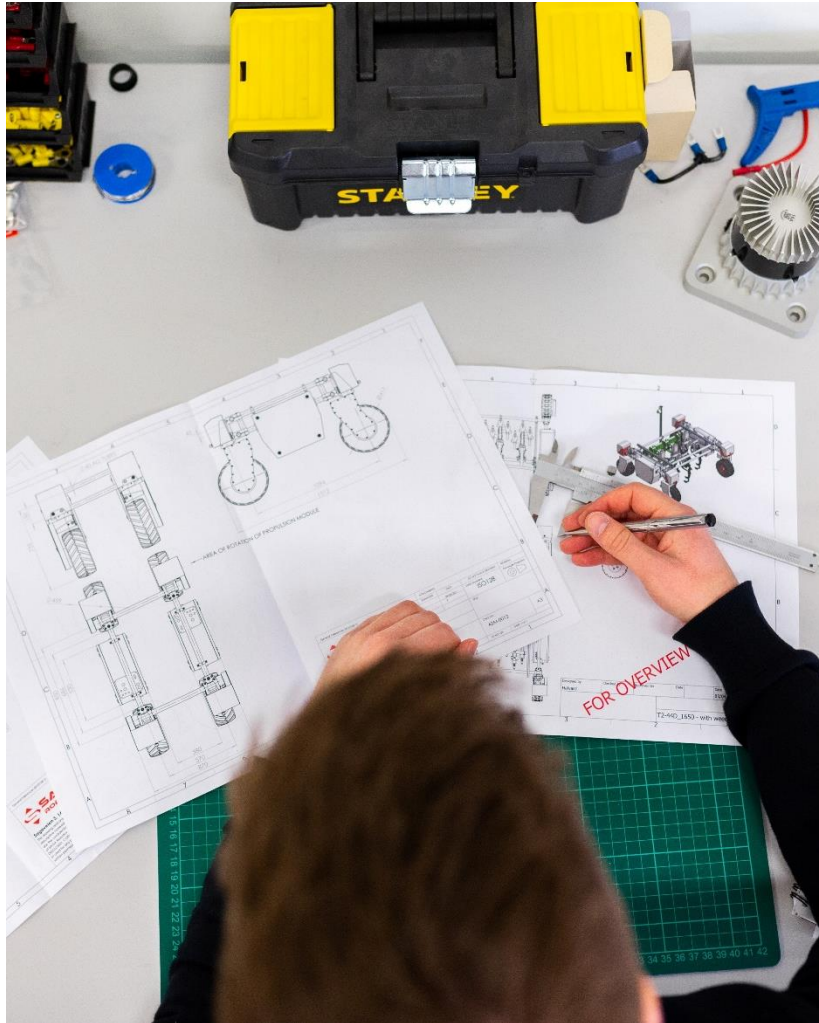
- Yes - some number of technical problems I have surely solved or a few best practices I have implemented.
- Sometimes I become the phone a friend where I will get a call to assist with some technical challenges that my friends / colleagues will have.

# What are you looking at doing after you complete your studies with EIT?



- My Master's with EIT! Had a chat with Jason Gabriel (EIT's HE Manager – Learning Support) and its planned for 2023 – Who knows, I might scoop a few promotions after that!

# Any advice to a future student looking at studying either EIT's Adv Dip or BSc?



- Don't wait too long - Start with the next intake.
- Please set time aside to do and pay attention to all the pre recordings and lecture notes - Very useful content.
- Use your LSO to your advantage.
- Define your purpose and remind yourself why you joined, the commitment will set in – the good grades will follow naturally.



## Higher Education Programs

- › Successful students spend approximately 10 hours per week, per unit.
- › Weekly tutorials (90 minutes for bachelors & 60 minutes for masters).
- › You must attend 70% of the live tutorials.
- › If studying online and you cannot attend a live tutorial, you can provide a summary in place of attendance (in most units).
- › In addition to the tutorial, you are required to watch the pre-recorded lecture.



## Bachelors

### *Next Intakes:*

*Online:* 31<sup>st</sup> January 2022

*On-Campus:* 21<sup>st</sup> February 2022

### *Duration:*

*Online:* 3 years full time  
(or part-time equivalent)

*On-Campus:* 3 years full time  
(or part-time equivalent)

### **Bachelor of Science**

(Civil and Structural Engineering)

### **Bachelor of Science**

(Electrical Engineering)

### **Bachelor of Science**

(Industrial Automation Engineering)

### **Bachelor of Science**

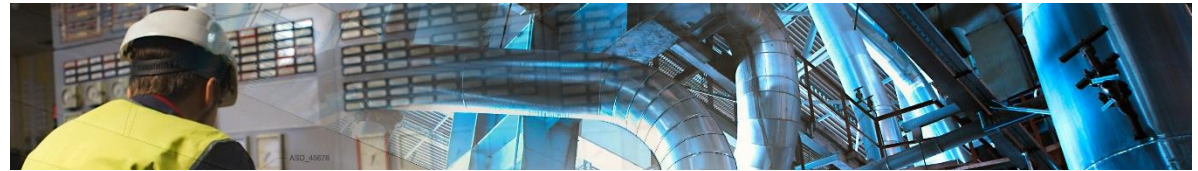
(Mechanical Engineering)





## Higher Education Programs

- › Successful students spend approximately 10 hours per week, per unit.
- › Weekly tutorials (60 minutes).
- › You must attend 70% of the live tutorials.
- › If you cannot attend a live tutorial, you can provide a summary in place of attendance (in most units).
- › In addition to the tutorial, you are required to watch the pre-recorded lecture.



## Graduate Certificates

### *Next Intake:*

*3<sup>rd</sup> January 2022*

### *Duration:*

*6 months full time or  
(part-time equivalent)*

### **Graduate Certificate**

(Civil Engineering: Structural)

### **Graduate Certificate**

(Electrical Engineering)

### **Graduate Certificate**

(Industrial Automation Engineering)

### **Graduate Certificate**

(Mechanical Engineering)

### **Graduate Certificate**

(Electrical and Instrumentation in Oil and Gas Engineering)

### **Graduate Certificate**

(Civil – Railways Infrastructure Engineering)

### **Graduate Certificate**

(Safety, Risk and Reliability Engineering)

### **Coming Soon**

### **Graduate Certificate**

(Chemical and Process Engineering)

### **Graduate Certificate**

(Civil Transportation Engineering)



## Higher Education Programs

- › Successful students spend approximately 10 hours per week, per unit.
- › Weekly tutorials (90 minutes for bachelors & 60 minutes for masters).
- › You must attend 70% of the live tutorials.
- › If you cannot attend a live tutorial, you can provide a summary in place of attendance (in most units).
- › In addition to the tutorial, you are required to watch the pre-recorded lecture.



## Masters

### **Next Intake:**

*Online: 3<sup>rd</sup> January 2022*

*On-Campus: 21st February 2022*

### **Duration:**

*Online: 2 years part-time intensive*

*On-Campus: 2 years full time*

*(or part-time equivalent)*

### **Master of Engineering**

(Civil: Structural)

### **Master of Engineering**

(Electrical Systems)

### **Master of Engineering**

(Industrial Automation)

### **Master of Engineering**

(Mechanical)

### **Intakes TBA**

### **Online - Master of Engineering**

(Civil: Railway Infrastructure)

### **Online - Master of Engineering**

(Electrical & Instrumentation in Oil & Gas)

### **Online - Master of Engineering**

(Safety, Risk & Reliability)





## Martin Masemola

- › Engineering Consultant from South Africa
- › Completed EIT's [Online - Master of Engineering \(Electrical Systems\)](#) in 2020
- › Currently studying EIT's [Doctor of Engineering](#)
- › Recipient of the [EIT Dean's Scholarship](#)

“EIT’s engineering programs are current and extremely practical for the world of work. As a Consulting Engineer, most of my modules were applicable in my daily activities with my clients, especially engineering standards such as IEEE-80.”

# What made you decide to study with EIT?



- The desire to study and work at the same time.
- Looking for accredited Masters programme with international recognition (Washington Accord).
- Enhance my engineering knowledge in a different institution.
- Ability to network with other students outside of South Africa.



*“As a LSO I love supporting our students on their learning journey and ensuring their experience with EIT is a positive and rewarding one”*

*Ms. Emily Levy  
Higher Education LSO*

How have you found your learning experience with EIT so far (in particular the online mode)?

Have you felt supported by your Learning Support Officer(s)?

Online study mode makes it easier to study anywhere and anytime, as long as you have internet access.

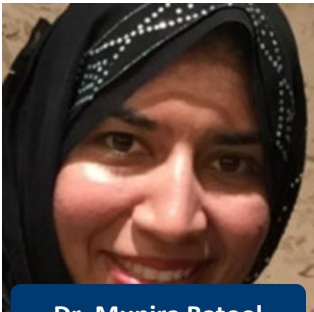
- Recorded lectures makes it easy to review and have access to attended lessons and tutorials.
- Most information is available in the e-library, easy to reference.
- I was constantly supported by the LSO, they are interested in your success.



Dr. Hadi Harb



Dr. Morteza Alizadeh



Dr. Munira Batool

## Have you had a favorite lecturer/instructor so far?

- All Lecturers are excellent and very professional with extensive experience.
- My personal favourite is Dr Hardi Harb, Dr Munira Batool and Dr Morteza Alizadeh.
  - Dr Hardi Harb – Makes it easy to understand by the pace and depth of explanation.
  - Dr Munira Batool – Makes complex problems look easy by structured approach and allow you the opportunity to express your opinion.
  - Dr Morteza Alizadeh – Knowledge based approach to engineering problems, he prefers to start from the basics, then accelerate the program once the basics are covered.

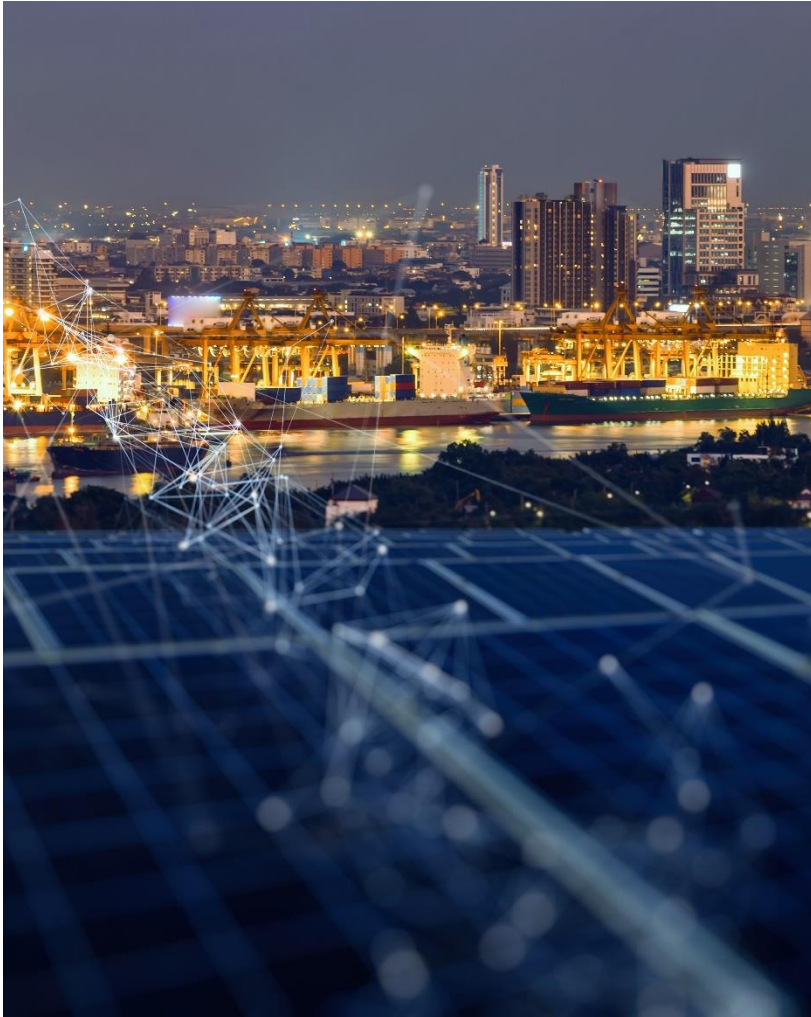


Have you found that you've been able to apply your knowledge from your studies to your workplace?



- EIT's engineering programs are current and extremely practical for the world of work.
- As a Consulting Engineer, most of my modules were applicable in my daily activities with my clients, especially engineering standards such as IEEE-80.

# What are you looking at doing after you complete your studies with EIT?



- I completed my Master of Engineering (Electrical Systems) in 2020.
- I am currently enrolled in EIT's Doctor of Engineering.
- EIT Dean's Scholarship recipient.
- After the Doctor of Engineering I will pursue teaching and research at the university, while continuing with my company as a Director and Principal Consultant.



# Any advice to a future student looking at studying either EIT's Adv Dip or BSc?



- First know why you want to pursue further studies in engineering, please look at the content or program structure.
- Choose the institution that best suits your needs e.g International Recognition, Accreditation etc.
- Look for practicality in the program, not the cost, you will need the knowledge more.
- Decide on the mode of study; online, on campus, part time or full time.

**Duration**

Three years full time or part time equivalent

**Study Mode**

Online or On-Campus

**Next Intake**

Online: 31<sup>st</sup> January 2022  
On-campus: 21<sup>st</sup> February 2022

**Relevant Fields**

All

Graduates will make original and significant contributions to the development, application and evaluation of professional knowledge by engaging with practical problems of demonstrated importance to their employment context and the wider body of engineering and technical knowledge.

The doctorate will run over three years (with two semesters per year) or part time equivalent. Academic supervision, coupled with guidance from an industry advisor, will be an integral part of this program.

# Pathways to Australia

- › EIT has two campuses in Australia; **Perth, Western Australia** and **Melbourne, Victoria**.
- › Students have the opportunity to apply for a higher education program on-campus with EIT.







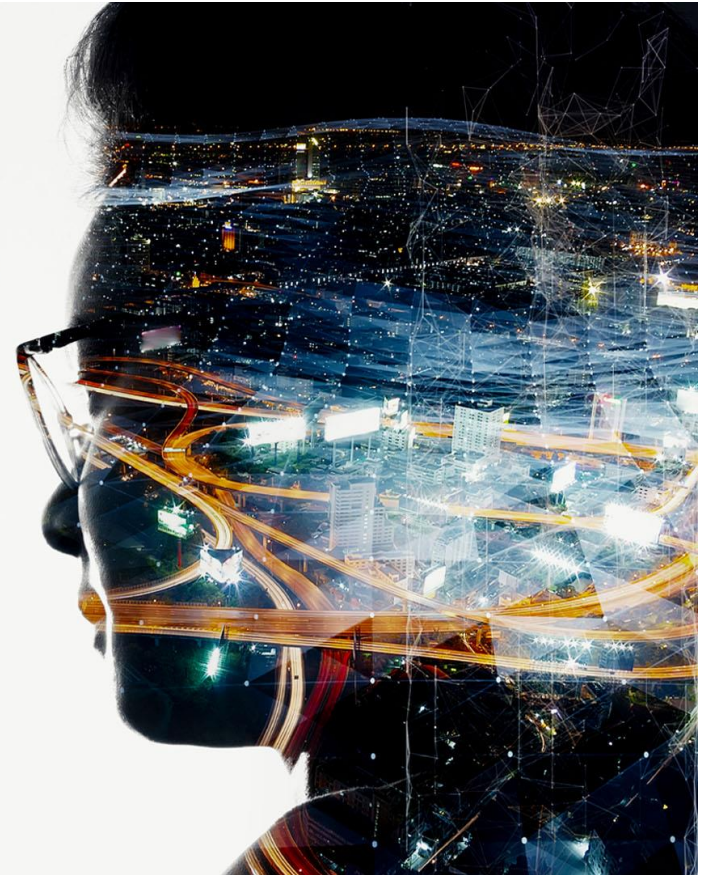
## How is Artificial Intelligence and Automation Changing the World?

Free Technical Topic Webinar

2.00AM - 3.00AM (AWST)  
Thursday 1 July 2021

[Register Now](#)

CRICOS Provider Number: 03567C | Higher Education Provider Number: 14008 | RTO Provider Number: 51971



<https://www.eit.edu.au/event/how-is-artificial-intelligence-and-automation-changing-the-world-2/>

# Q & A

# Thank you for attending.

## Contact Us



### Website

[www.eit.edu.au](http://www.eit.edu.au)



### Head Office

1031 Wellington Street West Perth  
Perth, WA 6005



### Phone

Inside Australia: 1300 138 522  
Outside Australia: +61 8 9321 1702



### Email

[riley.leske@eit.edu.au](mailto:riley.leske@eit.edu.au)