



Engineering Institute of Technology.

Insights Into EIT's Postgraduate Programs

24 April 2024 | Information Session Webinar

Presented by:

Emma Hart, Higher Education Manager

Hermanus Scholtz, Student Ambassador 2024

[Watch Webinar Recording Here](#)

We are dedicated to ensuring that you receive a world-class education and gain skills that you can immediately implement in the workforce.



World-Class Australia Accredited Education

Our vocational programs and higher education degrees are registered and accredited by the Australian Government. We have programs that are also recognized under three international engineering accords.



Engineering Specialists

EIT is one of the only institutes in the world specializing in Engineering. We deliver professional certificates, diplomas, advanced diplomas, undergraduate and graduate certificates, bachelor's and master's degrees, and a Doctorate of Engineering.



Industry Experienced Lecturers

Our lecturers are highly experienced engineers and subject specialists with applied knowledge. The technologies employed by EIT, both online and on-campus, enable us to source our lecturers from a large, global pool of expertise.



Industry Oriented Programs

Our programs are designed by industry experts, ensuring you graduate with cutting-edge skills that are valued by employers. Our program content remains current with rapidly changing technology and industry developments.



Unique Delivery Model

We deliver our programs via a unique delivery methodology that makes use of live and interactive webinars, an international pool of expert lecturers, dedicated learning support officers, and state-of-the-art such as hands-on workshops, remote laboratories, and simulation software.

Introduction - Presenter

Emma Hart – Higher Education Manager

Emma has a Bachelor's and a Masters's degree in Modern Languages and Linguistics as well as a Graduate Diploma of Education and a Cert IV in TAE. She has worked in the Education industry for over 15 years in a variety of roles from teaching and administration to overall management of programs and Colleges.

Emma currently oversees the Higher Education team and focuses on strategic planning, compliance, and quality assurance in addition to analyzing trends to continuously improve the Higher Education student experience.



Student Ambassadors

The Engineering Institute of Technology (EIT) has student ambassadors that are enthusiastic and dedicated individuals who serve as liaisons between EIT and prospective students, visitors, and the wider community.

These ambassadors embody the spirit and values of their school or university, offering insights into campus life, academic programs, extracurricular activities, and student support services. They often participate in campus tours, orientation weeks, and recruitment events, where they share their personal experiences, answer questions, and provide guidance to prospective students.



Student Ambassador



Hermanus Scholtz

Master of Engineering (Industrial Automation) – Current

Discover Why Students Choose EIT



Quality of educational experience for
Undergraduate Engineering Programs in Australia
2019/2020 and 2020/2021



Quality of educational experience for
Postgraduate Engineering Programs in Australia
2019/2020 and 2020/2021



Student Support for Undergraduate and
Postgraduate Engineering Programs in Australia
2020/2021



Teaching Quality for Undergraduate and
Postgraduate Engineering Programs in Australia
2020/2021

Postgraduate courses

Graduate Certificates (Online)

- Civil Engineering: Structural
- Industrial Automation Engineering
- Mechanical Engineering
- Safety, Risk and Reliability Engineering

Structure

- 4 units total usually:
 - 2 units in first term
 - 2 units in second term
- Each term 12 study weeks with no breaks
- Max 3 years to complete

AQF qualifications

AQF specification for the Senior Secondary Certificate of Education

AQF Level 1 – Certificate I

AQF Level 2 – Certificate II

AQF Level 3 – Certificate III

AQF Level 4 – Certificate IV

AQF Level 5 – Diploma

Level 6 – Advanced Diploma, Associate Degree

AQF Level 7 – Bachelor Degree

Undergraduate Certificate

Level 8 – Bachelor Honours Degree, Graduate Certificate, Graduate Diploma

AQF Level 9 – Masters Degree

AQF Level 10 – Doctoral Degree

Postgraduate courses

Graduate Diploma of Engineering (Online)

- Civil: Structural
- Electrical Systems
- Mechanical
- Industrial Automation

Structure

- 8 units total usually:
 - 2 units in each term
 - Over 4 terms (1 year)
- Each term 12 study weeks with no breaks
- Max 4 years to complete
- Makes up the first year of the related master degree

AQF qualifications

AQF specification for the Senior Secondary Certificate of Education

AQF Level 1 – Certificate I

AQF Level 2 – Certificate II

AQF Level 3 – Certificate III

AQF Level 4 – Certificate IV

AQF Level 5 – Diploma

Level 6 – Advanced Diploma, Associate Degree

AQF Level 7 – Bachelor Degree

Undergraduate Certificate

Level 8 – Bachelor Honours Degree, Graduate Certificate, Graduate Diploma

AQF Level 9 – Masters Degree

AQF Level 10 – Doctoral Degree

Postgraduate courses

Master of Engineering (Online & On Campus – Perth & Melbourne)

- Civil: Structural
- Electrical Systems
- Mechanical
- Industrial Automation

Structure (Online)

- 13 units total (inc thesis) + workshops + work experience:
 - 2 units in each term
 - Over 8 terms
 - Thesis takes place in the final 2 terms (semester)
- Each term 12 study weeks with no breaks
- Workshop and experience units required for completion
 - Students encouraged to apply for recognition of prior learning
- Max 5 years to complete

AQF qualifications

- AQF specification for the Senior Secondary Certificate of Education
- AQF Level 1 – Certificate I
- AQF Level 2 – Certificate II
- AQF Level 3 – Certificate III
- AQF Level 4 – Certificate IV
- AQF Level 5 – Diploma
- Level 6 – Advanced Diploma, Associate Degree
- AQF Level 7 – Bachelor Degree
- Undergraduate Certificate
- Level 8 – Bachelor Honours Degree, Graduate Certificate, Graduate Diploma
- AQF Level 9 – Masters Degree
- AQF Level 10 – Doctoral Degree

Professional Doctor of Engineering (Deng)

A professional doctorate is a structured program designed for experienced professionals to make a significant and original contribution to furthering professional practice. Professional doctorates promote the generation of knowledge and research skills to enhance professional practice.

A professional doctorate consists of coursework and a thesis

A professional doctorate focuses on applying research to practical problems, formulating solutions to complex issues, and designing effective professional practices within a field.

AQF qualifications

AQF specification for the Senior Secondary Certificate of Education

AQF Level 1 – Certificate I

AQF Level 2 – Certificate II

AQF Level 3 – Certificate III

AQF Level 4 – Certificate IV

AQF Level 5 – Diploma

Level 6 – Advanced Diploma, Associate Degree

AQF Level 7 – Bachelor Degree

Undergraduate Certificate

Level 8 – Bachelor Honours Degree, Graduate Certificate, Graduate Diploma

AQF Level 9 – Masters Degree

AQF Level 10 – Doctoral Degree

Higher Education Postgraduate Courses

Graduates of the Professional Doctor of Engineering (DEng) will be able to make original and significant contributions to the development, application and evaluation of professional knowledge by engaging with practical problems of demonstrated importance to their employment context and the wider body of engineering and technical knowledge.

- 3 years full time (Part Time is available)
- Online and On-Campus mode delivery
- 120 credit points – 32 coursework + 88 research
- Coursework + doctoral dissertation

AQF qualifications

- AQF specification for the Senior Secondary Certificate of Education
- AQF Level 1 – Certificate I
- AQF Level 2 – Certificate II
- AQF Level 3 – Certificate III
- AQF Level 4 – Certificate IV
- AQF Level 5 – Diploma
- Level 6 – Advanced Diploma, Associate Degree
- AQF Level 7 – Bachelor Degree
- Undergraduate Certificate
- Level 8 – Bachelor Honours Degree, Graduate Certificate, Graduate Diploma
- AQF Level 9 – Masters Degree
- AQF Level 10 – Doctoral Degree

Higher Education Postgraduate Courses

DEng Course Structure

YEAR 1	Units	Research or Coursework	Credit Points
Terms 1 & 2 (equivalent to 1 semester)	• DEng601 - Engineering Practise and Key Research Methodology	Coursework	4
	• DEng602 - Technology Evaluation and Intellectual Property	Coursework	4
	• DEng603 - Applied Mathematical Modelling and Simulation	Coursework	4
	• ★DEng604 - Data Acquisition	Coursework	4
Terms 3 & 4 (1 semester)	• DEng700 - Research Project Proposal (over 2 terms)	Research	12
YEAR 2			
Terms 1 & 2 (1 semester)	• ★DEng801 - Advanced Data Analysis	Coursework	8
	• DEng802 - Doctoral Dissertation Research Paper 1	Research	14
Terms 3 & 4 (1 semester)	• ★DEng803 - Big Data Analysis and Pattern Recognition	Coursework	8
	• DEng804 - Doctoral Dissertation Research Paper 2	Research	14
YEAR 3			
Terms 1 - 4 (2 semesters)	• DEng900 - Doctoral Dissertation (over 4 terms)	Research	48
Total Coursework Units (equivalent to 2 semesters)			32
Total Research Units (equivalent to 4 semesters)			88
TOTAL CREDIT POINTS (equivalent to 6 semesters or 3 years)			120

* Elective units - Other approved postgraduate unit/s as appropriate to the relevant field of study (Master- year 2 level unit) can be taken on by the student in consultation with their supervisor. These alternative unit/s, endorsed by the supervisor, must be approved by the ACC/Deputy Dean. Each DEng unit need to be substituted with 2 MEng elective units for credit equivalence.

- Learning Support Officers (LSO)
- Provide guidance on non content related information such as:
 - Live tutorial information
 - Assessment dates and times
 - Assessment extensions
 - Unit and assessment grades
 - Help with Learning Management System
- Student Support Services
 - Support workshops – time management etc
 - Health and well being information
 - Academic related resources - revision techniques



Software used throughout course

- Moodle - unit material, assessments, grades.
- Big Blue Button - hosts live tutorial sessions.
- IRIS - invigilation software for timed assessments, e.g. exams.
- Remote Labs – various engineering software for assessments.
- Microsoft Office – EIT email account, online Word, Excel etc versions.
- Paradigm - invoices, contact and payment information, upcoming units.

*You control
your learning*

Entry Requirements, Fees and Payments

Entry Requirements

All ER's can be found on our website for each course

Options for fees

- Fees are issued per study period, depending on the number of units taken:
 - Paid at the beginning of each study period by credit card or direct deposit to confirm enrollment
 - Installments can be arranged by credit card only. Split over the study period
 - FEE-HELP (for Australian Citizens).
- A variety of partial scholarships are available to apply for.
 - Please visit our Scholarships page for more details:
<https://www.eit.edu.au/how-to-apply/scholarships/>

Student Experience

Hermanus Scholtz

Student Ambassador

EIT Courses:

- 52886WA Advanced Diploma of Industrial Automation Engineering – Completed May 2019
- Bachelor of Science (Industrial Automation Engineering) – Completed December 2022
- Master of Engineering (Industrial Automation) – Current



Why did you choose the program you are currently studying?

- Childhood fascination with remote-controlled cars and radios
- Often caused trouble by tinkering with father's electronics
- Studied process instruments to understand and repair them
- Worked diligently to master skills in process instruments
- Learned to program PLCs
- Faced setbacks due to gaps in knowledge
- Embarked on transformative journey with EIT



Student Experience

How is your experience with EIT so far?

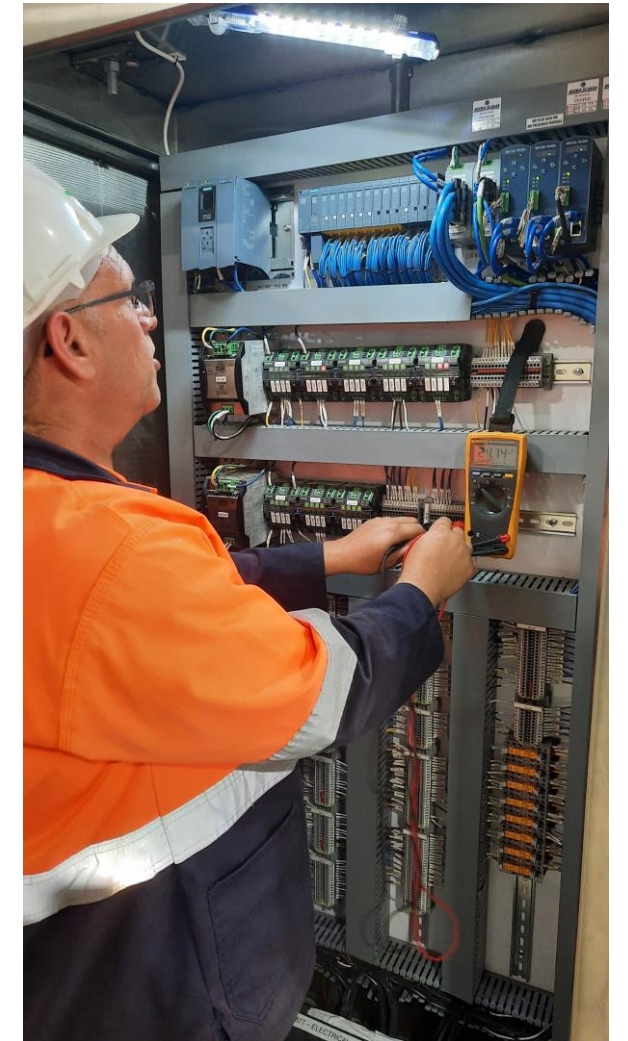
- Absolutely amazing
- Current, relevant content in my field
- Practical simulations in labs, learning software such as Matlab, Codesys, and Python
- Building meaningful workplace models
- Top-class practicing engineers as lecturers
- Support systems at EIT designed to ensure your success



Student Experience

What has EIT taught you?

- Becoming the engineer I am today!!!
- Knowledge
- Self-belief
- Commitment
- Confidence
- Passion
- Results-oriented
- Go-getter



Student Experience

How do you see this program benefitting your professional career?

- Upgraded skillset
- Enhanced knowledge
- Improved complex thinking abilities
- Advanced career path with *promotions!*



Student Experience

Any specific highlights?

- EIT – International recognition
- Finalizing my Masters, can't believe it!
- 7 years flew by
- Addicted to lifelong learning
- Next step: Masters or D-Eng with EIT in 2025-Jan



Q&A



Engineering Institute of Technology.

Thank you for attending!

Contact Us:



Website

www.eit.edu.au



Email

webinars@eit.edu.au



Head Office

6 & 8 Thelma Street West Perth
Perth, WA 6005



Courses

<https://www.eit.edu.au/schedule/>



Phone

Inside Australia: 1300 138 522
Outside Australia: +61 8 9321 1702